



Exceptional Technology  
for Life Care

## Why LED?

Light-Emitting Diodes (LEDs) are becoming more common for illumination in energy saving environments. Compared to conventional halogen lamps, LEDs have a wide range of technological, economical and environmental advantage with, low heat generation, minimal power consumption and virtually unlimited life.

The multi-lens matrix arrangement produces powerful and homogeneous light at the surface and in depth, with no stray lights. So, the entire surgical site is clearly visible under homogeneous pattern of illumination of the emitted light, which is a 100% shadow-free light on the surface and in deep cavities with a light intensity up to 160,000 lux and more.

- Clear tissue visualization : Optimized with LEDs to cover the entire visible color spectrum
- Excellent low heat management : Prevents tissue dehydration and infection.

### Sims Prime (105M LED)



Spot Dia 15 -18 cm  
Luminous power 1,60,000 Lux ( $\pm 10\%$ )  
Variable Colour Temperature (CRI 72-94%)  
Brightness Control  
Penetration depth 12 inch  
Auto Focus

### Sims Prime (42R LED)



Spot Dia 15 -18 cm  
Luminous power 1,60,000 Lux ( $\pm 10\%$ )  
Variable Colour Temperature (CRI 72-94%)  
Brightness Control  
Penetration depth 12 inch  
Central Focusing

### Sims Prime (48R LED)



Spot Dia 15 -18 cm  
Luminous power 1,50,000 Lux ( $\pm 10\%$ )  
Variable Colour Temperature (CRI 72-94%)  
Brightness Control  
Penetration depth 12 inch  
Auto Focus



# Examination Light 7 LED

## Modal-ExL-4

This examination light, best suited for all Kind of OPD procedure, and Minor surgical procedures.

### Salient Features:

1. It can be wall mounted Or can be pedestal type.
2. Can be mount on Normal I.V. stand.
3. Stand comes with Locking wheels

### Technical Specification 12 LED

1. Spot Dia. 15 cm
2. Colot temp. 4700K
3. Intensity at 30 cm 60,000 LUX ( $\pm 10\%$ )
4. Power 12 watt.
5. Optional battery operated
6. Intensity Control

### Technical Specification 7 LED

- |                        |                         |
|------------------------|-------------------------|
| Intensity              | : 25,000 Lux $\pm 10\%$ |
| Size of Light Field    | : 100 mm                |
| Colour Temperature     | : 4800 K                |
| Colour Rendering Index | : 93 RA                 |
| LED Life               | : >50000 Hrs.           |
| Number of LED          | : 7                     |
| Diameter of Light      | : 125 mm                |
| Power Supply           | : 220V/50Hz AC          |

## 7 LED Plastics Wali



# Exl. 21 LED

Modal POL-4 specially designed for , Minor operation purpose

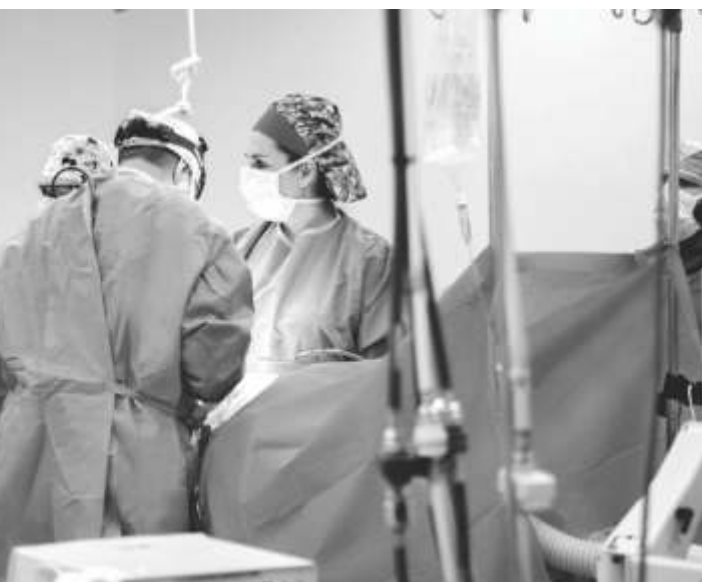
### Technical specification:-

1. Spot Dia. 15 - 18 cm
2. Luminous power 60,000 Lux ( $\pm 10\%$ )
3. Color Rendering index (CRI) 92%
4. Power consumption 15 watt
5. Microprocessor controlled intensity (optional)
6. Focusing adjustable
7. Battery backup optional



### Imported Head Band

1. With Battery Backup
2. Lux output 80,000 Lux ( $\pm 10\%$ )
3. Distance of Fuld 30-40cm
4. Adjustable LED



## Exceptional Technology for Life Care

### Stable And Reliable

- Large number of LED.
- Superior Shadow Reduction  
The matrix arrangement of optics remove shadow to keep the surgical site clearly illuminated while maintaining a large depth of field





## Sims Prima - 21R

Specially designed for minor operation purpose

### Technical specification:-

1. Spot Dia. 15 - 18 cm
2. Luminous power 1,00,000 Lux ( $\pm 10\%$ )
3. Color Rendering index (CRI) 95%
4. Power consumption 60 watt
5. Microprocessor controlled intensity (optional)
6. Focusing adjustable
7. Battery backup optional

### All models have:-

1. Depth of field 10 inches
2. Handle type sterilizable
3. LED arrangement MATRIX
4. Color temperature VARIABLE



## Sims Prima - 36R

Specially designed for minor or major operation theater

### Technical specification:-

1. Spot Dia 15 - 18 cm
2. Luminous power 1,50,000 Lux
3. Color Rendering index (CRI) 95%
4. Microprocessor controlled intensity (optional)
5. Focusing adjustable
6. Battery backup optional
7. Light Column 38 inches
8. Shadow less

## Sims Prima Gold 24R

Prima Gold is an absolute product of fines, using the superior " LED Technology" with Reflector Technology

- |                             |                                    |
|-----------------------------|------------------------------------|
| 1 Focus                     | 180-230mm                          |
| 2 Light intensity           | 80,000 Lux 1,20,000 Lux            |
| 3 Light source type         | LED (with 50000 hrs life)          |
| 4 Lamp housing              | Fiber/Aluminium                    |
| 5 Dome size                 | 700mm                              |
| 6 Color radiant index       | 96%                                |
| 7 Illumination depth        | 70mm                               |
| 8 Radiations                | Zero IR and Zero UV Radiation      |
| 9 Light field adjustment    | Freely                             |
| 10 Color temp:              | 5000 (10% tolerance)               |
| 11 Dome design              | Parabolic with aluminium reflector |
| 12 Handle                   | Sterilizable Handle                |
| 13 Light intensity distance | 1 meter                            |
| 14 Light Body Rotate        | 180 degree around light arm        |
| 15 Safety glass             | equipped with scratch proof        |
| 16 Control                  | Intensity control                  |
| 17 Light type               | Mobile with Battery Backup         |
| 18 Head height              | 2Mtrs. (max), 1 mtr (min)          |
| 19 Straight height          | 2.23 Mtrs                          |
| 20 Balance arm rotate       | 10 degree up & 40 degree down      |



### Optional items

- Battery Backup
- Extra Bulb
- Camera optional

## Super Value LED OT Lights (Economical)

Economical range of O.T. Lights, best suited for budget hospital

### Sims Prima 48M

1. 48 LED Dome
2. Lux: 1,50,000 ( + - 10%)
3. Central Focusing
4. Focus Point 15cm (Variable)
5. Penetration Depth 8-10 Inches
6. Intensity Controller



### Sims Prima 40M

Aluminium Body

1. 72 LED Dome
2. Lux: 1,50,000 ( + - 10%)
3. Central Focusing
4. Focus Point 15cm
5. Penetration Depth 8-10 Inches
6. Intensity Controller



In ABS Body

### (84M)



In Aluminum Body



### Sims Prima - 84M

1. 84 LED Dome
2. Lux: 1,60,000 ( + - 10%)
3. Central Focusing
4. Focus Point 15cm
5. Penetration Depth 8-10 Inches
6. Intensity Controller



### (63M)



## SIMS Prima 4

(128 LED)



(84 LED)



### TECHNICAL SPECIFICATIONS

Light column	42 inch
Color Temp.	VARIABLE OR FIXED
Color rendering Index(CRI)	93%(variable)
Spot Diameter	15 CM TO 27CM
Focusing Type	ELECTRONIC OR VARIABLE
LED arrangement	Matrix Type (for max. shadow reduction)
Color temp. controls	Available with memory function
Shadow reduction per dome	100%
Power supply Type	12 Volt DC
Lamp Housing Type	Heat /fire resistant Fiber
(polymer) or Aluminum (optional)	
Luminous power (At max.)	1,60,000 LUX (1.10%)
Brightness control	2 % to 100%
Depth Of Field	12 - 15 inch (99cm)
Penetration depth	12 inch
Controls	Panel available(Control Panel)
	Remote control (Optional)
Rotations	360 Deg.
Vertical adjustments	55 .5 cm to 67 cm
Sterilizable handle	Available
Safety Glass	Equipped with scratch proof safety glass
No. of suspensions	One dome, two dome or Three dome
<b>Quality CERTIFICATE</b>	<b>*CE</b>



## SIMS Prima 4-89

(with 3 wings)



### OPTIONAL ITEMS

Camera	Can be mount with Dome or on Extra Arm
Monitor	Can be mount on Extra Arm
Recorder and communication	Can be equipped with Recorder, or with online viewing at remote location
Battery Back up	Can be provided on demand
Mounting type	Pedestal or Ceiling

# SIMS Prima 84 R



## Optional

- Android Based touch control panel
- Central Focusing
- Bluetooth connectivity
- Wall Mounted KIOSK

## TECHNICAL SPECIFICATIONS

Light column	42 inch	Luminous power (At max.)	2,00,000 LUX (1.10%) Per Dome)
Color Temp.	VARIABLE OR FIXED	Brightness control	2 % to 100%
Color rendering Index(CRI)	93%(variable)	Depth Of Field	12 - 15 inch (99cm)
Spot Diameter	15 CM TO 27CM	Penetration depth	12 inch
Focusing Type	ELECTRONIC OR VARIABLE	Controls	Panel available(Control Panel) Remote control (Optional)
LED arrangement	Matrix Type (for max. shadow reduction)	Rotations	360° (Optional)
Color temp. controls	Available with memory function	Vertical adjustments	55.5 cm to 67 cm
Shadow reduction per dome	100%	Sterilizable handle	Available
Power supply Type	12 Volt DC	Safety Glass	Equipped with scratch proof safety glass
Lamp Housing Type	Heat /fire resistant Fiber or Aluminum (Optional)	No. of suspensions	One dome, two dome or Three dome

**Quality CERTIFICATE**

**\*CE**



# SIMS Prima 72R



## TECHNICAL SPECIFICATIONS

Light column	42 inch
Color Temp.	VARIABLE OR FIXED
Color rendering Index(CRI)	93%(variable)
Spot Diameter	15 CM TO 27CM
Focusing Type	ELECTRONIC OR VARIABLE
LED arrangement	Matrix Type (for max. shadow reduction)
Color temp. controls	Available with memory function
Shadow reduction per dome	100%
Power supply Type	12 Volt DC
Lamp Housing Type	Heat /fire resistant Fiber or Aluminum

Luminous power (At max.)	1,80,000 LUX (1.10%)
Brightness control	2 % to 100%
Depth Of Field	12 - 15 inch (99cm)
Penetration depth	12 inch
Controls	Panel available(Control Panel) Remote control (Optional)
Rotations	360 Deg.
Vertical adjustments	55 .5 cm to 67 cm
Sterilizable handle	Available
Safety Glass	Equipped with scratch proof safety glass
No. of suspensions	One dome, two dome or Three dome
<b>Quality CERTIFICATE</b>	<b>*CE</b>

## OPTIONAL ITEMS

### Camera

Can be mount with Dome or on Extra Arm

### Monitor

Can be mount on Extra arm

### Recorder and communication

Can be equipped with Recorder, or with online viewing at remote location

### Battery Back up

Can be provided on demand

### Mounting type

Pedestal or Ceiling



### Camera & Recording System can be attached (optional)

#### Technical Specification of Camera

Power Supply:	12 Volts DC
Image Sensor:	1/4 and 1/3 (SONY)
Signal Processing:	Digital Signal Processor
AGC/White Balance:	Auto
Min Illumination:	0.5 Lux
Resolution in line:	NTSE: 768(H) x 468(V) PAL; (852)(H) x 582(V) and 1024(H) x 768(V)



High Definition Camera option also available on demand

## Stable And Reliable

- Large number of LED.
- Superior Shadow Reduction.  
The matrix arrangement of optics remove shadows to keep the surgical site clearly illuminated while maintaining a large depth of field

## LED Spectrum and light temp Low Irradiance

- LED provides no infrared and UV light
- 41" Column of Light  
Large spot size and depth of field provides a large column of light, decreasing the need to adjust the light during a procedure



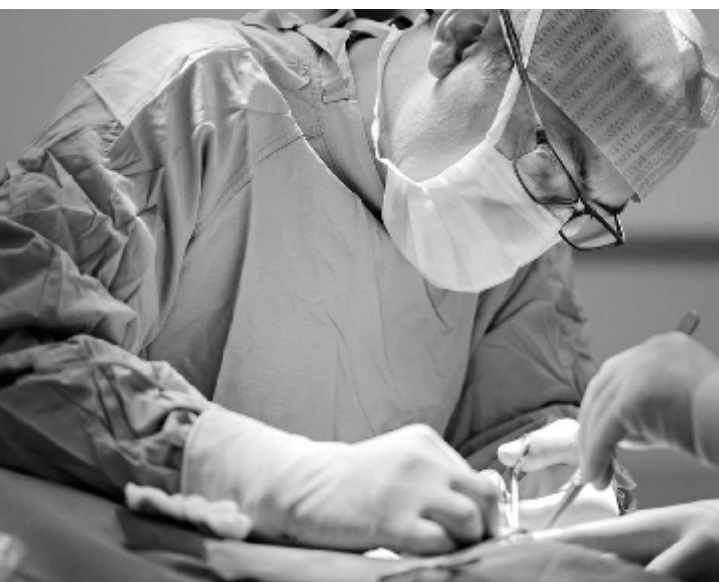


## Sims Prima 48



### TECHNICAL SPECIFICATIONS

Light column	42 inch	Luminous power (At max.)	1,60,000 LUX (1.10%)
Color Temp.	VARIABLE OR FIXED (Optional)	Brightness control	2 % to 100%
Color rendering Index(CRI)	>93%(variable)	Depth Of Field	34 inch (99cm)
Spot Diameter	15 CM TO 27CM	Penetration depth	12 inch
Focusing Type	VARIABLE	Controls	Panel available
LED arrangement	Matrix Type (for max. shadow reduction)		Remote control (Optional)
Color temp. controls	Available with memory function	Rotations	360 Deg.
Shadow reduction per dome	100%	Vertical adjustments	55 .5 cm to 67 cm
Power supply Type	12 Volt DC	Sterilizable handle	Available
Lamp Housing Type	Heat /fire resistant Fiber (polymer) or Aluminum (optional)	Safety Glass	Equipped with scratch proof safety glass
		No. of suspensions	One dome, two dome or Three dome
		<b>Quality Certificate</b>	<b>*CE</b>



*“Specially designed for high end surgery with complete illumination, at major depth or at region of interest (ROI) ”*

# Operation Theater Tables

## OPERATING C-ARM TABLES (ELECTRIC) OR ELECTRO MECHANICAL

Electrically operated with cable remote. Having all surgical position chair, neuro, spinal, Flex/reflex, trendelenburg/ reverse trendelenburg, lateral, lithotomy position. The eccentrically position table column and inter-changeable head and leg section allow optima use of the C-arm image intensifier. Movement Controlled by the actuators to achieve smooth and without any jerks. The electric system is maintenance free virtually silene, waterproof, shockproof, demands no force to operate and operates with greater strength and smoother operation. Table is mounted on castors wheels with break. Bade and column cover and made of stainless steel for easy cleaning radio translucent top. Stainless steel for easy cleaning Radio translucent top. Stainless steel rails with clamps accept all standard accessories.

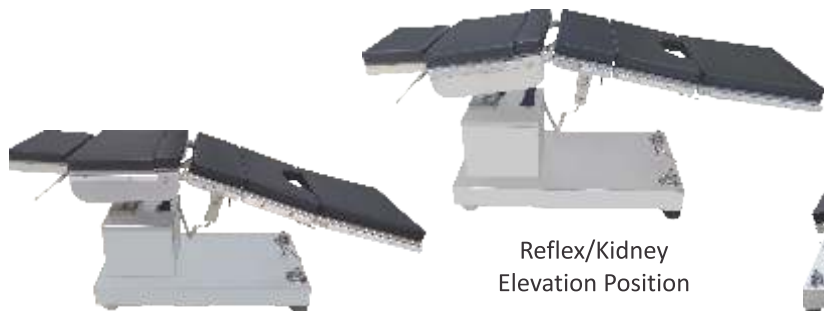


## Hydrullic C-Arm Table

### Technical Data:

185 L x 50 W x 75 to 95 ht. cm. trendelenburg /reserve 35 deg. Lateral tilt 20 deg. (both side) flex/reflex 220 deg. Standard accessories: anesthetist screen, atm rest with ss top padded lateral support, padded lithotomy crutches, padded shoulder support, rubber mattress

## Operating Table Positions



Flex Position

Reflex/Kidney  
Elevation Position



Reverse Trendelenburg/  
Trendelenburg Position



Trendelenburg Position



Chair Position



# Orthopaedic Traction Attachment with Various Positions



- Traction Position using Pelvis support in the Middle/Centre with Orthopaedic Traction Shoes.



- Leg Traction using Pelvis support in Extreme Left



- Leg Traction using Pelvis support in Extreme Right



- Femoral Operating Position in Lateral Position using Inner Thigh Support for Lateral Support

## Hydraulic Operation Theater Table (Side End Control)

Hydraulic operation table side end control. Facilitates almost all the purpose and requirements of major/minor surgical exercise and procedures. Five sectional table top allows the surgeon to occupy and move to all required & desired positions. Single action hydraulic mechanism foot operated. Heavy base stainless steel covered with foot locking

**Technical Data :** 185 L x 50W x 75 to 95 ht. cm. trendelenburg/ reverse 35 deg. Lateral tilt 20 deg. (birth side) flex/reflex 220 deg. Standard accessories: anesthetist screen, arm rest with ss top padded lateral support, padded lithotomy crutches, padded shoulder support, rubber mattress 330

**Technical Data :** 185 L x 50W x 75 to 95 ht. cm. trendelenburg/ reverse 35 deg. Lateral tilt 20 deg. (birth side) flex/reflex 220 deg. Standard accessories: anesthetist screen, arm rest with ss top padded lateral support, padded lithotomy crutches, padded shoulder support, rubber mattress



## Mortuary Chamber



## General/Delivery Table



### OUR OTHER PRODUCT RANGE

- Digital video Colposcope
- LED Phototherapy
- Infant Warmer
- Electro Surgical Cautry
- Co<sub>2</sub> Insufflator
- Flexible Endoscopes
- Laparoscopy HD set
- Medical Furniture

*and many more....*





## Digital Video Colposcope

**Application :** Due To Deep focal length you can Diagnose, Erosion , CIN, Cancer With Video and image that provide natural c=Colour of the tissue . Moreover to differentiate between epithelial abnormalities and carcinomas & for continuous monitoring of cervical changes to study cytology and to provide proper treatment Gynaecologist needs a reliable and affordable Colposcope.

### Technical Specifications

- It have full HD 1920 x 1080 resolutions.
- Aspect ratio of 16:9 (HD)
- Digital matrix processor.
- Have corner to corner uniform brightness.
- Inbuilt footswitch in the output cable.
- Have magnification from min.1x to 52 x
- Focal distance 145-510mm.
- Field of view 10-120mm
- Depth of view -5-210mm.
- Working distance: 200-300mm
- Have minimum 18MP
- Resolution > 1200 lines (Std.).
- It have 3-video output :DVI – 1920 X 1080 S-Video, Composite video
- It have high MCD super bright white LED light source.
- Color temperature > 7000° K
- Facility for fast focusing, zooming, image freeze using thumb on the hand held unit itself.
- Acetic test timer and magnification indicator available.
- Soft touch and water proof Control panel.
- Fast auto /manual focusing available.
- Image freeze function.
- Equipped with Gamma Processor.
- Remote control facility.
- Foot switch to save the pictures.
- It have facility to generate cryo-surgery report.
- Intensity control is there.



## Image Management Software

- Facility to masking, marking and highlighting of any abnormalities.
- Have facility to generate report of sexual abuse cases.
- Image capturing while recording/playing.
- Final reports with one, two, three & four images.
- 500 pictures can be saved for single colposcopy in software & have 500 reference pictures.
- Have referral linked images with findings for comparison.
- Facility to save & send the report through e-mail in pdf format.
- Facility of colposcopy assisted dynamic cases.
- Facility to take colposcopy images with the colposcopy report on hard copy.
- Facility to store still images, cine loop or procedure on CD.
- Imaging software package compatible with both desktop & laptop.
- Online support facility (through internet) for software of the system.
- The software shall have facility for future upgradeability.



### DEDICATED COLPOSCOPY SOFTWARE

- With inbuilt Colposcopy Atlas
- With inbuilt dedicated report patterns
- Biopsy Marking
- Lesion Measurement
- Comparison Mode with Database & Add to library feature
- Timer display
- E-Flip, Mirror Image

### OPTIONAL ITEMS

- Computer
- Color Monitor
- Inkjet printer
- Foot switch

### ACCESSORIES WITH MACHINE

- Colposcopy Software
- Foot switch (optional)
- Video cables
- Installation / operation manual

## Portable full HD laparoscopy set



### Camera

- FHD 1920x1080P
- 2.8 SONY COMS
- Anti-HF interference
- Waterproof IPX7
- USB recording
- PUSH AWB

### Monitor

- 15.6 inch HD monitor
- IPS Full view 178°
- Brightness 450CD/M²
- Display Colors 16.2M
- Not flashing
- Filter blue light

### LED

- Power 80W LED
- American lamp
- 5700K-6500K
- CRI ≥ 90
- Illumination ≥ 2M Lus
- LED Life 60000h

## Full HD Laparoscopy Camera with Recorder



Full HD  
Camera

LED Light Source Digital



- FHD 1920 x 1080P
- 2.8MP SONY COMS Camera
- Anti-HF /nterference
- Waterproof IPX7
- USB recording
- PUSH AWB



# LAPAROSCOPY COMPLETE SET



**Digital Cautery 400 watt  
Non Programmable**



**programmable**



**Vessel Sealer**



**Analog Cautery**



**Co2 insufflator**

*Devotion & Dedication for Health*

## OUR PROFILE

We as "SOFT IMAGING & MEDICAL SOLUTION" Engaged in manufacturing & Export of LED OT LIGHTS, O.T Tables, LED Phototherapy, Video colposcope etc., with No. of variants that can suit every Budget, Nursing home, a big "SUPER SPECIALITY HOSPITALS".

Since our establishment in year 2005 with a focus to be a global supplier we have introduced a large number of Medical products with best quality and at very affordable prices. Thus the company is continuously achieving new heights everyday with out increasing satisfied customer at national & international level.

Our channel partners in India and across the globe are our extended arms & believes on same policy that "Quality of Service would speak for us". Thus great emphasis has been laid to achieve this goal and to prove our vision "To emerge as a complete medical solution provider from India".



SOFT IMAGING & MEDICAL SOLUTIONS

Manufactured by :

## SOFT IMAGING & MEDICAL SOLUTIONS

### ADDRESS

401-402,  
Gupta Complex Old,  
Rohtak Road Inderlok  
Delhi -110035

### TELEPHONE

011-47532629

### VISIT US

[www.simshealthcare.com](http://www.simshealthcare.com)

### EMAIL:

[softimaging@rediffmail.com](mailto:softimaging@rediffmail.com)

Our Representative